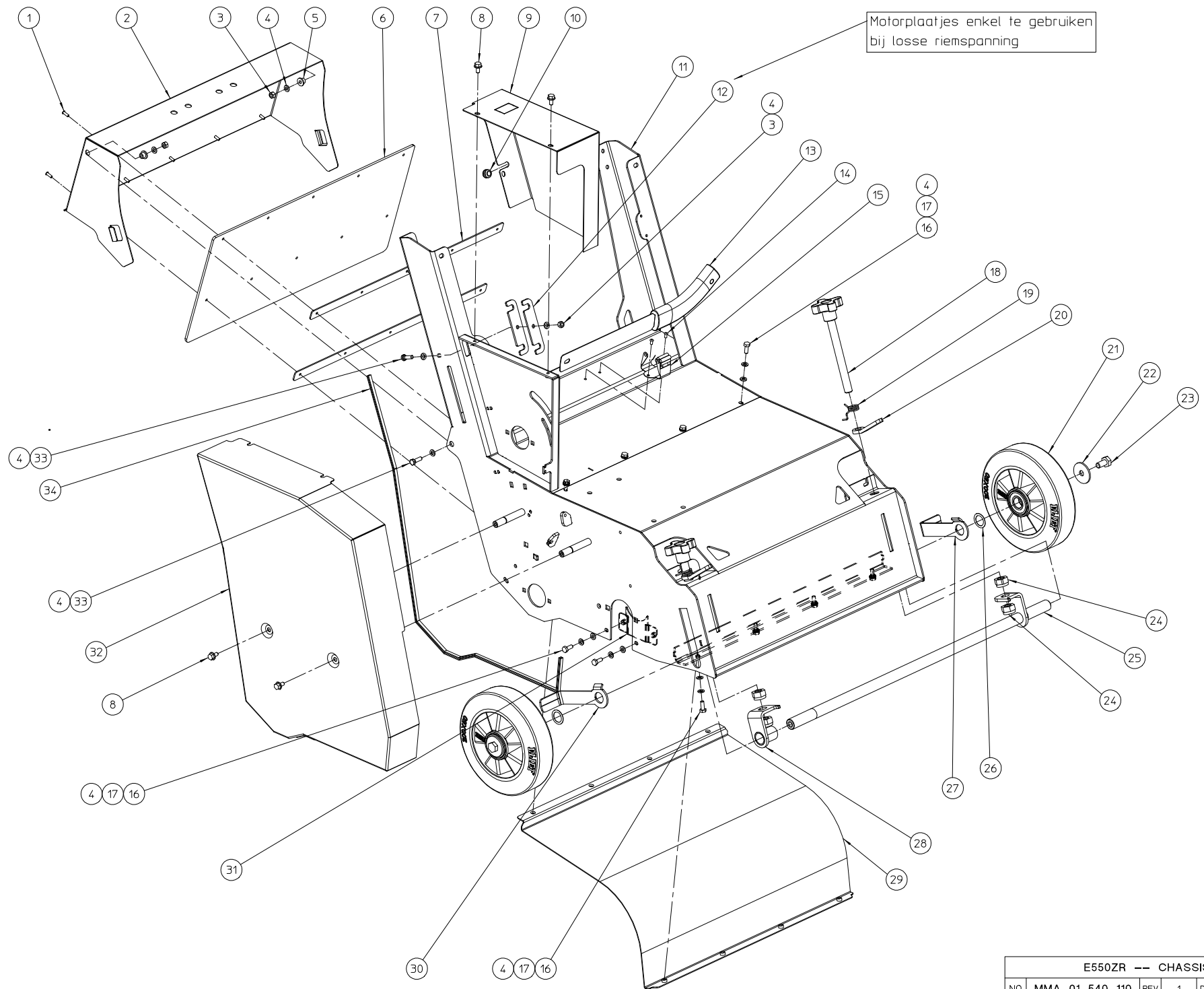


| E550ZR -- GENERAL | | | | | |
|-------------------|----------------|-----|---|------|------------|
| NO | MMA 01 540 100 | REV | 1 | DATE | 2021/10/01 |

MMA 01 540 100**E 550 ZR**

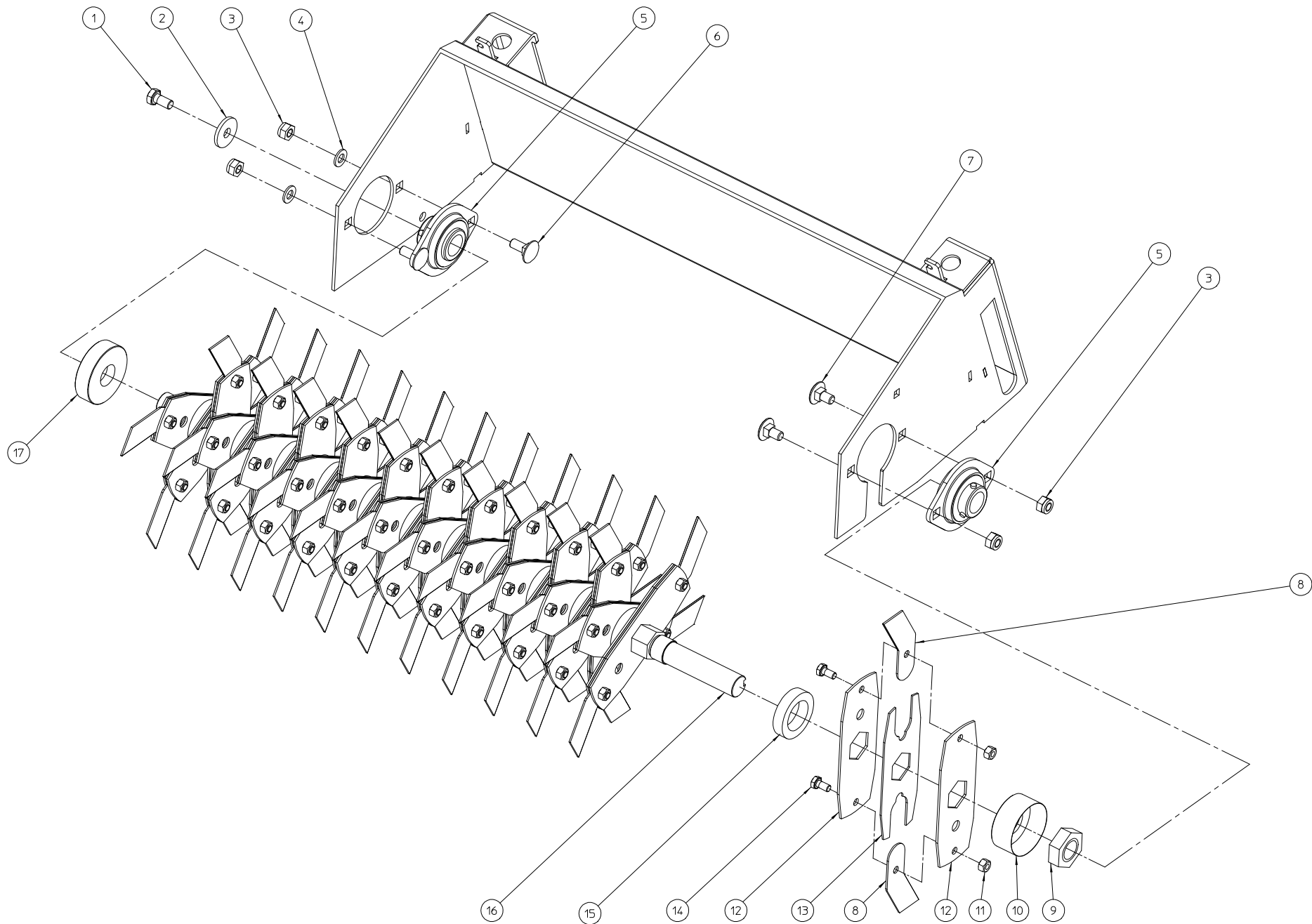
| Pos No | Name | Description | Total Qty |
|---------------|----------------|--------------------------------|------------------|
| 110 | MMA 01 540 110 | MONTAGE GESTEL E550ZR | 1 |
| 120 | MMA 01 480 120 | MONTAGE MESSENAS | 1 |
| 130 | MMA 01 540 130 | AANDRIJVING_MESSENAS | 1 |
| 140 | MMA 01 540 140 | MONTAGE TRACTIEROL | 1 |
| 150 | MMA 01 540 150 | MONTAGE AANDRIJVING TRACTIEROL | 1 |
| 170 | MMA 01 480 170 | MONTAGE STUUR | 1 |
| 180 | MMA 01 480 180 | OPTIES-C-550-COLLECTOR | 1 |
| 190 | MMA 01 540 190 | MONTAGE KLEVERS | 1 |



| E550ZR -- CHASSIS | | | | | |
|-------------------|----------------|-----|---|------|------------|
| NO | MMA 01 540 110 | REV | 1 | DATE | 2021/10/01 |

MMA 01 540 110**MONTAGE GESTEL E550ZR**

| Pos No | Name | Description | Total Qty |
|--------|----------------|------------------------------------|-----------|
| 1 | BB 221 104 120 | DIN 7337 RIVET ALU 3.9X12 | 10 |
| 2 | MPA 01 540 040 | DEFLECTEUR ARRIERE | 1 |
| 3 | BS 502 000 600 | DIN 985 ECROU NYLON M6 | 3 |
| 4 | BS 531 000 600 | DIN 125 RONDELLE M6 | 16 |
| 5 | BR 112 060 800 | PALIER + COL. (6/10/15X2+6.5) | 2 |
| 6 | BR 900 001 910 | BAVETTE CAOUTCHOUC ANTI-PROJECTION | 1 |
| 7 | MPA 01 540 060 | LATTE BAVETTE CAOUTCHOUC | 2 |
| 8 | BS 511 400 612 | DIN 6921 VIS A EMBASE DENTEE M6X12 | 5 |
| 9 | MPA 01 480 270 | CAPE BOITE TRANSMISSION TRACTION | 1 |
| 10 | BR 000 208 030 | PASSE-FILS EN CAOUTCHOUC 8/3 | 1 |
| 11 | MPA 01 540 030 | CHASSIS E550 ZR | 1 |
| 12 | MPA 01 480 180 | TUSSENPLAATJE MOTOR | 2 |
| 13 | BG 220 225 401 | ROLSCHRAPER | 1 |
| 14 | BB 221 004 080 | BLINDKLINKNAGEL 4X8-STAAAL | 2 |
| 15 | BG 741 905 111 | GEREEDSCHAPSHOUDER WIT 22-35MM | 1 |
| 16 | BS 512 000 616 | DIN 933 VIS M6X16 | 10 |
| 17 | BS 533 000 600 | DIN 127 RONDELLE GROER M6 | 10 |
| 18 | BN 630 214 600 | BOUTON CRANTES M14x140 - 189-60 | 2 |
| 19 | BV 909 000 030 | RESSORT DE TORSION | 2 |
| 20 | MPA 01 090 260 | LEVIER DE BLOCAGE | 2 |
| 21 | BW 320 020 000 | ROUE ALUMINIUM 200/50-100 | 2 |
| 22 | BS 532 010 406 | RONDELLE DE CARROSSERIE M10X40X3 | 2 |
| 23 | BS 512 001 020 | DIN 933 VIS M10X20 | 2 |
| 24 | BS 502 001 400 | DIN 985 ECROU NYLON M14 | 4 |
| 25 | MPA 01 480 300 | HOOGTEREGELINGSSTEUN WIELAS L | 1 |
| 26 | BS 036 002 005 | TOLERANTIEVLOOT 28X20X0.5 | 2 |
| 27 | MPA 01 360 260 | GRATTOIR ROUE GAUCHE | 1 |
| 28 | MPA 01 480 310 | HOOGTEREGELINGSSTEUN WIEL R | 1 |
| 29 | MPA 01 480 320 | CARTER | 1 |
| 30 | MPA 01 360 250 | GRATTOIR ROUE AVANT DROIT | 1 |
| 31 | MPA 01 480 350 | TOLE FERMETURE PALIER | 1 |
| 32 | MPA 01 540 070 | CAPE TRANSMISSION | 1 |
| 33 | BS 512 000 620 | DIN 933 VIS M6X20 | 3 |
| 34 | BR 000 910 930 | MU-PROFIEL REF.U1 E 600-93 CM | 1 |

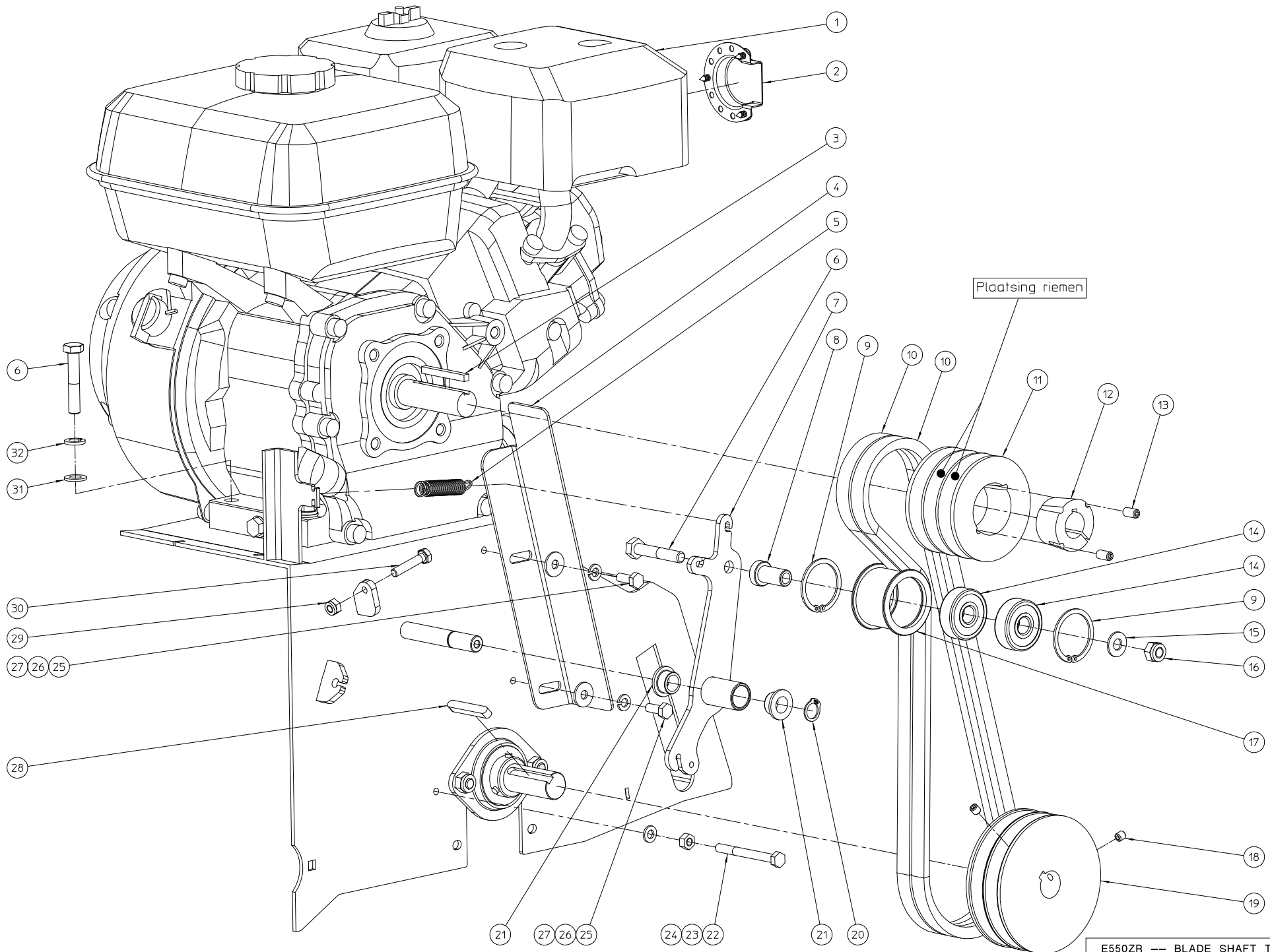


POST 9-->180° VERDRAAID
TEGENOVER ELKAAR MONTEREN

| | | | | | |
|---------------------|----------------|-----|---|------|------------|
| C550 -- BLADE SHAFT | | | | | |
| NO | MMA 01 480 120 | REV | 2 | DATE | 2021/08/30 |

MMA 01 480 120**MONTAGE MESSENAS**

| Pos No | Name | Description | Total Qty |
|--------|----------------|---------------------------------|-----------|
| 1 | BS 512 170 816 | TAPBOUT_DIN_933-M8X16-LINKS | 1 |
| 2 | BS 532 008 306 | RONDELLE DE CARROSSERIE M8X30X3 | 1 |
| 3 | BS 502 000 800 | DIN 985 ECROU NYLON M8 | 4 |
| 4 | BS 531 000 800 | DIN 125 RONDELLE M8 | 2 |
| 5 | BL 801 102 002 | UCPFL-204 | 2 |
| 6 | BS 554 100 820 | DIN 603 VIS A BOIS M8X20 | 2 |
| 7 | BS 554 100 816 | DIN 603 VIS A BOIS M8X16 | 2 |
| 8 | MPA 01 480 065 | MES | 66 |
| 9 | BS 501 902 200 | DIN 439 1/2 ECROU M22 1.5 | 1 |
| 10 | MPA 01 480 235 | STEUNSLUITRING MESSEN-R | 1 |
| 11 | BS 502 000 600 | DIN 985 ECROU NYLON M6 | 66 |
| 12 | MPA 01 480 060 | MESKLEMPLAAT | 66 |
| 13 | MPA 01 480 055 | MESHOUDER | 33 |
| 14 | BS 512 000 612 | DIN 933 VIS M6X12 | 66 |
| 15 | BR 111 291 010 | BAGUE NYLON 28.5/44X10 | 32 |
| 16 | MPA 01 480 225 | MESSENAS | 1 |
| 17 | MPA 01 480 230 | STEUNSLUITRING MESSEN.-L | 1 |



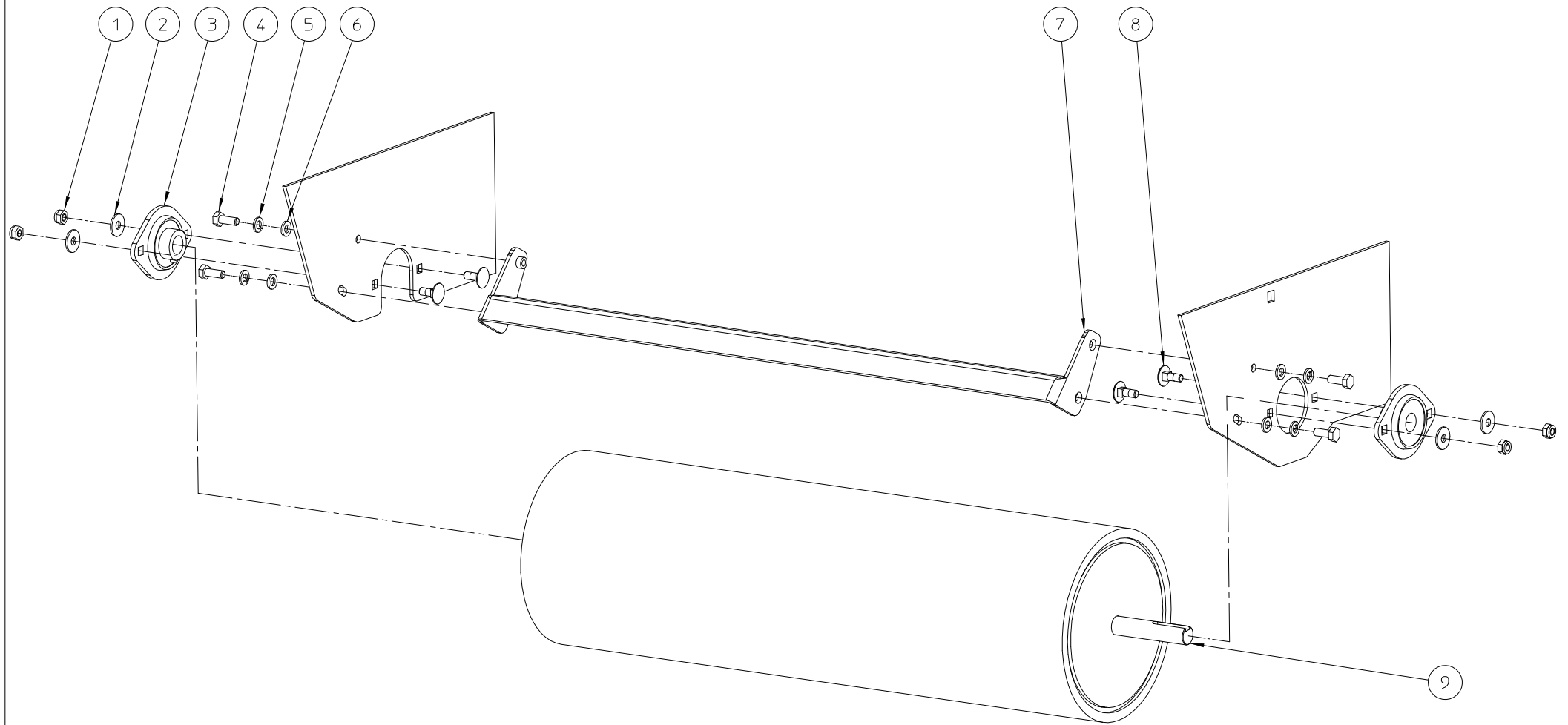
Plaatsing riemen

| | | | | | |
|-------------------------------------|----------------|-----|---|------|------------|
| E550ZR --- BLADE SHAFT TRANSMISSION | | | | | |
| NO | MMA 01 540 130 | REV | 1 | DATE | 2021/08/30 |

MMA 01 540 130

AANDRIJVING_MESSENAS

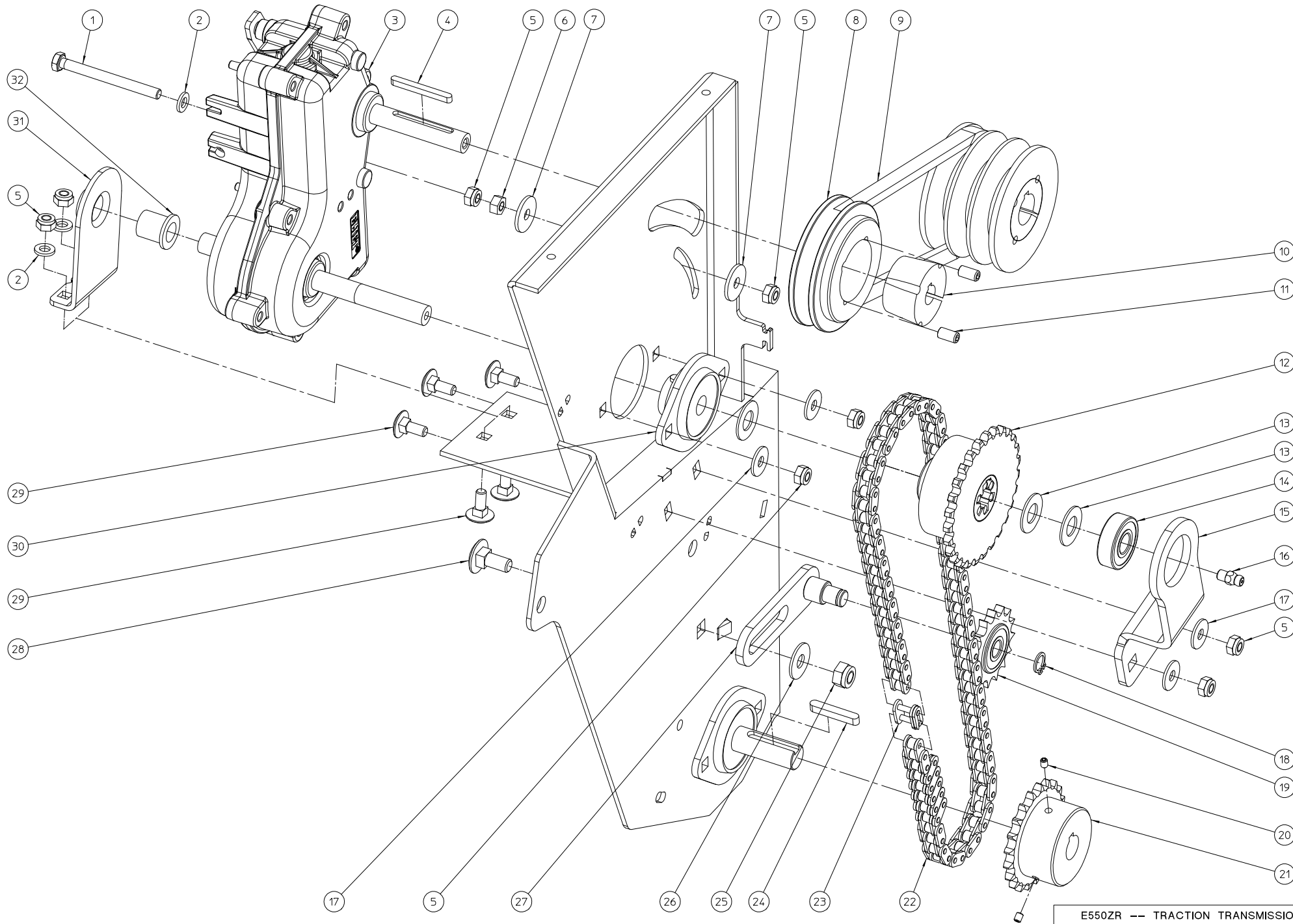
| Pos No | Name | Description | Total Qty |
|--------|----------------|---|-----------|
| 1 | BM 202 106 500 | HONDA GX 200 GX4 | 1 |
| 2 | BM 261 393 760 | KNALDEMPER B&S 393760 | 1 |
| 3 | BB 342 050 544 | DIN 6880 CLAVETTE 4.7X4.7X44 | 1 |
| 4 | MPA 01 480 040 | RIEMVANGER | 1 |
| 5 | BV 011 011 005 | TREKVEER 1X11X55 | 1 |
| 6 | BS 511 000 841 | DIN 931 VIS M8X45 | 5 |
| 7 | MPA 01 420 515 | STEUN AANDRUKROL | 1 |
| 8 | MPA 01 350 040 | AFSTANDBUS_RIEMSPANNER | 1 |
| 9 | BB 002 000 370 | BORGVEEER DIN-472 Ø37 | 2 |
| 10 | BA 527 708 890 | V-RIEM SPA ROFLEX GARDEN-4L350-889EXT | 2 |
| 11 | BA 562 707 130 | POULIE 3SPA- 71-TL | 1 |
| 12 | BB 501 211 200 | KLEMBUS TL 1108 GAT Ø 19.05 | 1 |
| 13 | BB 501 306 130 | SCR 1/4"X1/2"-TL1108 | 2 |
| 14 | BL 001 203 703 | DIN 625 ROUL.NTN 6301 2RZ | 2 |
| 15 | BS 532 008 183 | RONDELLE DE CARROSSERIE M8X18X1.5 | 1 |
| 16 | BS 502 000 800 | DIN 985 ECROU NYLON M8 | 1 |
| 17 | MPA 01 350 030 | MPA-AANDRUKROL_RIEMSPANNER | 1 |
| 18 | BS 023 000 606 | DIN 916 VIS DE PRESSION M6X6 | 2 |
| 19 | BA 565 709 521 | V RIEMSCHIIF 2X SPA95 Alésage 20H7 | 1 |
| 20 | BB 001 000 120 | CIRCLIPS EXTERIEUR DIN 471 DIA:12 | 1 |
| 21 | BR 112 121 090 | PALIER + COL. (12/16/22X2+8) | 2 |
| 22 | BS 511 000 644 | DIN 931 VIS M6X60 | 1 |
| 23 | BS 501 000 600 | DIN 934 ECROU M6 | 1 |
| 24 | BS 531 000 600 | DIN 125 RONDELLE M6 | 1 |
| 25 | BS 512 000 616 | DIN 933 VIS M6X16 | 2 |
| 26 | BS 533 000 600 | DIN 127 RONDELLE GROER M6 | 2 |
| 27 | BS 532 006 183 | RONDELLE DE CARROSSERIE M6X18X1.5 DIN 440 | 2 |
| 28 | BB 351 060 640 | DIN 6885A CLAVETTE ARRONDIE 6X6X40 | 1 |
| 29 | BS 502 000 600 | DIN 985 ECROU NYLON M6 | 1 |
| 30 | BS 512 000 630 | DIN 933 VIS M6X30 | 1 |
| 31 | BS 531 000 800 | DIN 125 RONDELLE M8 | 4 |
| 32 | BS 533 000 800 | DIN 127 RONDELLE GROER M8 | 4 |



| | | | | | |
|-------------------------|----------------|-----|---|------|------------|
| E550ZR -- TRACTION ROLL | | | | | |
| NO | MMA 01 540 140 | REV | 1 | DATE | 2021/08/18 |

MMA 01 540 140**MONTAGE TRACTIEROL**

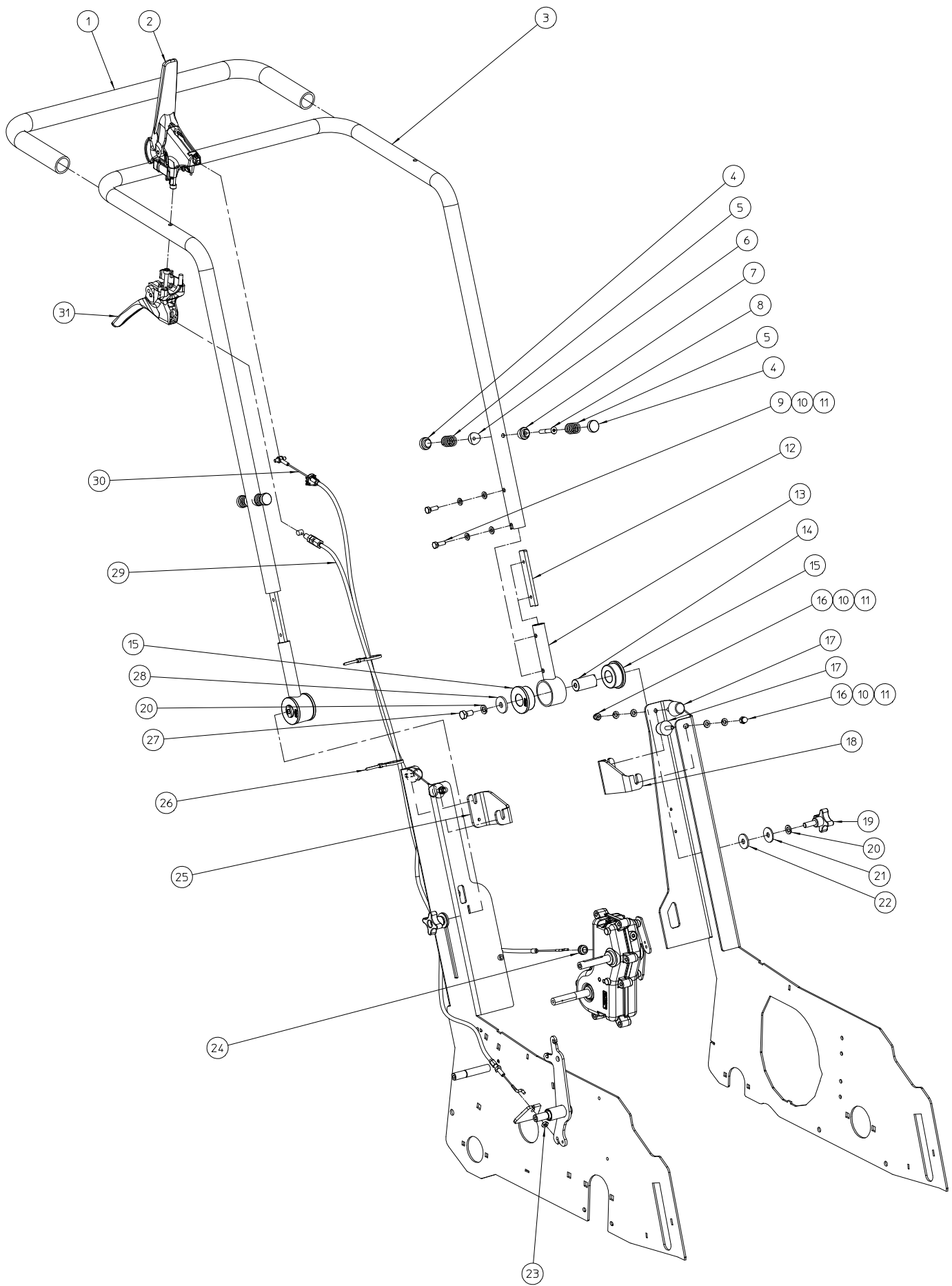
| Pos No | Name | Description | Total Qty |
|---------------|----------------|---|------------------|
| 1 | BS 502 000 600 | DIN 985 ECROU NYLON M6 | 4 |
| 2 | BS 532 006 183 | RONDELLE DE CARROSSERIE M6X18X1.5 DIN 440 | 4 |
| 3 | BL 801 101 500 | PALIER COMPLET ASPFL 202 | 2 |
| 4 | BS 512 000 616 | DIN 933 VIS M6X16 | 4 |
| 5 | BS 533 000 600 | DIN 127 RONDELLE GROER M6 | 4 |
| 6 | BS 531 000 600 | DIN 125 RONDELLE M6 | 4 |
| 7 | MPA 01 540 080 | GRATTOIR ROULEAU | 1 |
| 8 | BS 554 100 616 | DIN 603 VIS A BOIS M6X16 | 4 |
| 9 | MPA 01 480 390 | ROULEAU DE TRACTION | 1 |



| E550ZR -- TRACTION TRANSMISSION | | | | | | |
|---------------------------------|----------------|-----|---|------|------------|--|
| NO | MMA 01 540 150 | REV | 1 | DATE | 2021/08/30 | |

MMA 01 540 150**MONTAGE AANDRIJVING TRACTIEROL**

| Pos No | Name | Description | Total Qty |
|--------|----------------|---|-----------|
| 1 | BS 512 000 645 | SCREW_DIN_933-M6X65 | 1 |
| 2 | BS 531 000 600 | DIN 125 RONDELLE M6 | 3 |
| 3 | BA 670 405 405 | REDUCTIEKAST ELIET E600-COMPACTOR | 1 |
| 4 | BB 351 040 440 | SPIE 4X4X40 | 1 |
| 5 | BS 502 000 600 | DIN 985 ECROU NYLON M6 | 8 |
| 6 | BS 501 000 600 | DIN 934 ECROU M6 | 1 |
| 7 | BS 532 006 224 | RONDELLE DE CARROSSERIE M6X22X2 DIN 440 | 2 |
| 8 | BA 561 707 510 | V RIEMSCHIJF 1 SPZ 75 | 1 |
| 9 | BA 521 405 120 | COURROIE SPZ 512 | 1 |
| 10 | BB 501 111 200 | MOYEU AMOVIBLE TL1108_12 | 1 |
| 11 | BB 501 306 130 | SCR 1/4"X1/2"-TL1108 | 2 |
| 12 | BA 171 027 289 | KETTINGWIEL SIMPEX 3/8X7/32 27T | 1 |
| 13 | BR 111 120 100 | NYLON RING 12.2X24X1.3 | 3 |
| 14 | BL 001 203 203 | DIN 625 ROUL.NTN 6201 2RZ | 1 |
| 15 | MPA 01 480 380 | LAGERSTEUN | 1 |
| 16 | BY 100 106 100 | GRAISSEUR M6 | 1 |
| 17 | BS 532 006 183 | RONDELLE DE CARROSSERIE M6X18X1.5 DIN 440 | 4 |
| 18 | BB 001 000 100 | CIRCLIPS EXTERIEUR DIN 471 DIA:10 | 1 |
| 19 | BA 198 010 150 | PIGNON TENDEUR 3/8"X7/32" 15 DENTS | 1 |
| 20 | BS 023 000 405 | DIN 916 VIS DE PRESSION M4X5 | 2 |
| 21 | BA 161 021 150 | PIGNON SIMPLEX 3/8X7/32 21 DENTS ALÉS.15 | 1 |
| 22 | BA 101 085 020 | CHAINE SIMPLEX 3 8 X7 32 85 MAILLES | 1 |
| 23 | BA 151 200 000 | RACCORD CHAINE 3/8"X7/32" | 1 |
| 24 | BB 351 050 532 | SPIE DIN-6885-A 5X5X32 | 1 |
| 25 | BS 502 000 800 | DIN 985 ECROU NYLON M8 | 1 |
| 26 | BS 532 008 223 | RONDELLE DE CARROSSERIE M8X22X1.5 | 1 |
| 27 | MPA 01 480 075 | KETTINGSPANNER | 1 |
| 28 | BS 554 100 820 | DIN 603 VIS A BOIS M8X20 | 1 |
| 29 | BS 554 100 616 | DIN 603 VIS A BOIS M6X16 | 6 |
| 30 | BL 801 101 200 | PALIER COMPLET ASPFL 201 | 1 |
| 31 | MPA 01 480 400 | SUPPORT BOITE TRANSMISSION | 1 |
| 32 | BR 112 121 900 | PALIER + COL. (12/16/21X2+17) | 1 |

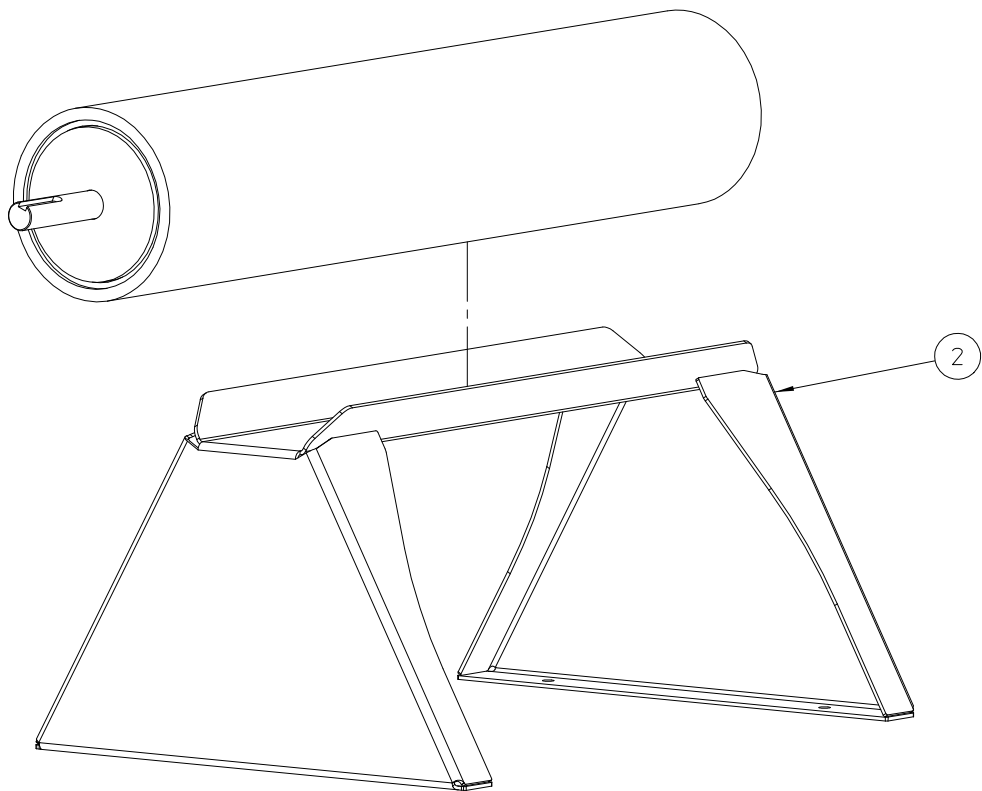
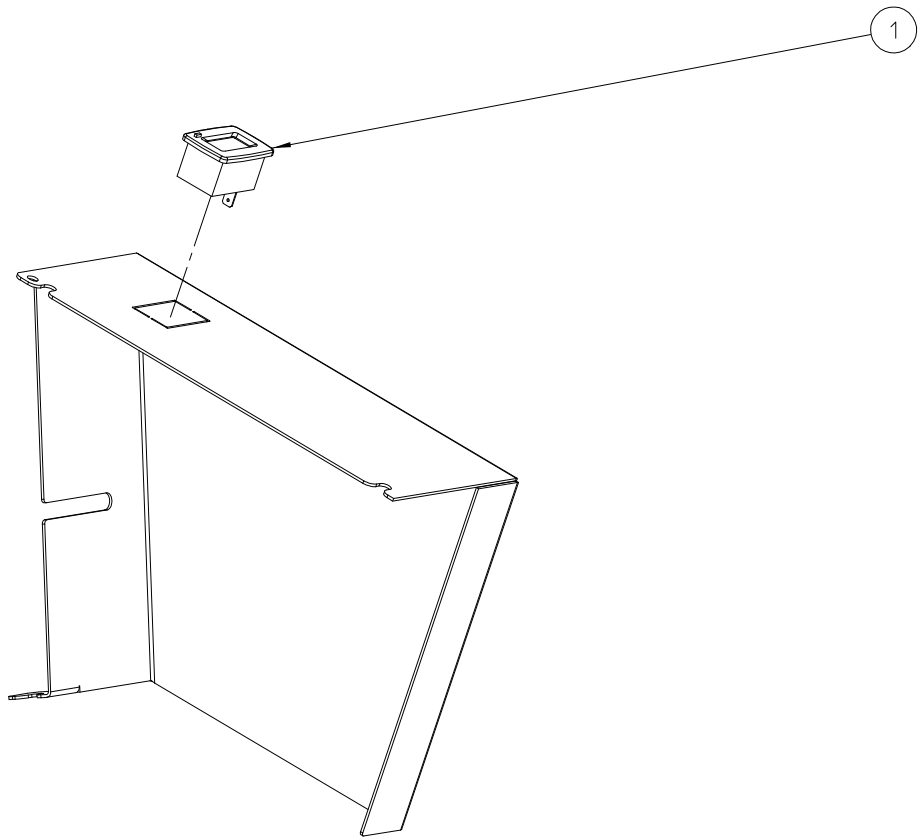


| C550 -- HANDLEBARS | | | | | | |
|--------------------|----------------|-----|---|------|------------|--|
| NO | MMA 01 480 170 | REV | 4 | DATE | 2021/08/18 | |

MMA 01 480 170

MONTAGE STUUR

| Pos No | Name | Description | Total Qty |
|--------|----------------|--|-----------|
| 1 | BN 231 002 085 | SOFT-GRIP-SCHLAUG TP/K 24,5X3X850 MM-BLACK | 1 |
| 2 | BN 332 500 570 | DODEMANSHENDEL SACCON LMSSR10 MBO-STROKE_27 | 1 |
| 3 | MPA 01 480 330 | GUIDON | 1 |
| 4 | BR 910 001 090 | BUTTEE RESSORT GUIDON | 4 |
| 5 | BV 925 000 040 | DRUKVEER 2X17,5X22,5 | 4 |
| 6 | BR 910 001 080 | BAGUE RESSORT GUIDON (PARTIE FILETEE) | 2 |
| 7 | BR 910 001 070 | BAGUE RESSORT GUIDON (PARTIE CONIQUE) | 2 |
| 8 | BS 522 100 640 | DIN 7991 VIS A TETE FRAISEE M6X40 | 2 |
| 9 | BS 512 000 618 | DIN 933 VIS M6X18 | 4 |
| 10 | BS 533 000 600 | DIN 127 RONDELLE GROER M6 | 8 |
| 11 | BS 531 000 600 | DIN 125 RONDELLE M6 | 8 |
| 12 | MPA 01 480 245 | KLEMPLAAT STUUR | 2 |
| 13 | MPA 01 480 165 | SCHARNIER KLEMBEUGEL STUUR | 2 |
| 14 | MPA 01 420 875 | SCHARNIER KLEMBUS | 2 |
| 15 | BR 900 001 860 | SILENTBLOC AMORTISSEUR | 4 |
| 16 | BS 505 500 600 | DIN 1587 ECROU TETE RONDE M6 | 4 |
| 17 | BR 600 425 170 | CYLINDRE BLOC D:25 L:17 M6X18 | 4 |
| 18 | MPA 01 490 390 | BUTEE GAUCHE GUIDON | 1 |
| 19 | BN 630 208 200 | BOUTON_CRANTES_M8X20 | 2 |
| 20 | BS 533 000 800 | DIN 127 RONDELLE GROER M8 | 4 |
| 21 | BS 532 008 254 | RONDELLE DE CARROSSERIE M8X25X2 | 2 |
| 22 | BR 111 080 200 | RONDELLE NYLON 8,4 X 25 X 2,5 | 2 |
| 23 | BS 501 900 600 | DIN 439 1/2 ECROU M6 | 1 |
| 24 | BR 000 208 030 | PASSE-FILS EN CAOUTCHOUC 8/3 | 1 |
| 25 | MPA 01 490 380 | BUTEE DROITE GUIDON | 1 |
| 26 | BE 043 010 140 | COLSON 140 X 3.5 NOIR | 2 |
| 27 | BS 512 000 816 | DIN 933 VIS M8X16 | 2 |
| 28 | BS 532 008 306 | RONDELLE DE CARROSSERIE M8X30X3 | 2 |
| 29 | BK 153 181 020 | GESLOTEN BEDIENINGSKABEL TRACTIEROL | 1 |
| 30 | BK 153 181 270 | GESLOTEN BEDIENINGSKABEL | 1 |
| 31 | BN 332 500 870 | HENDEL SACCON LMBC5BB40-MBO-STROKE_DIA.25 BLAC | 1 |



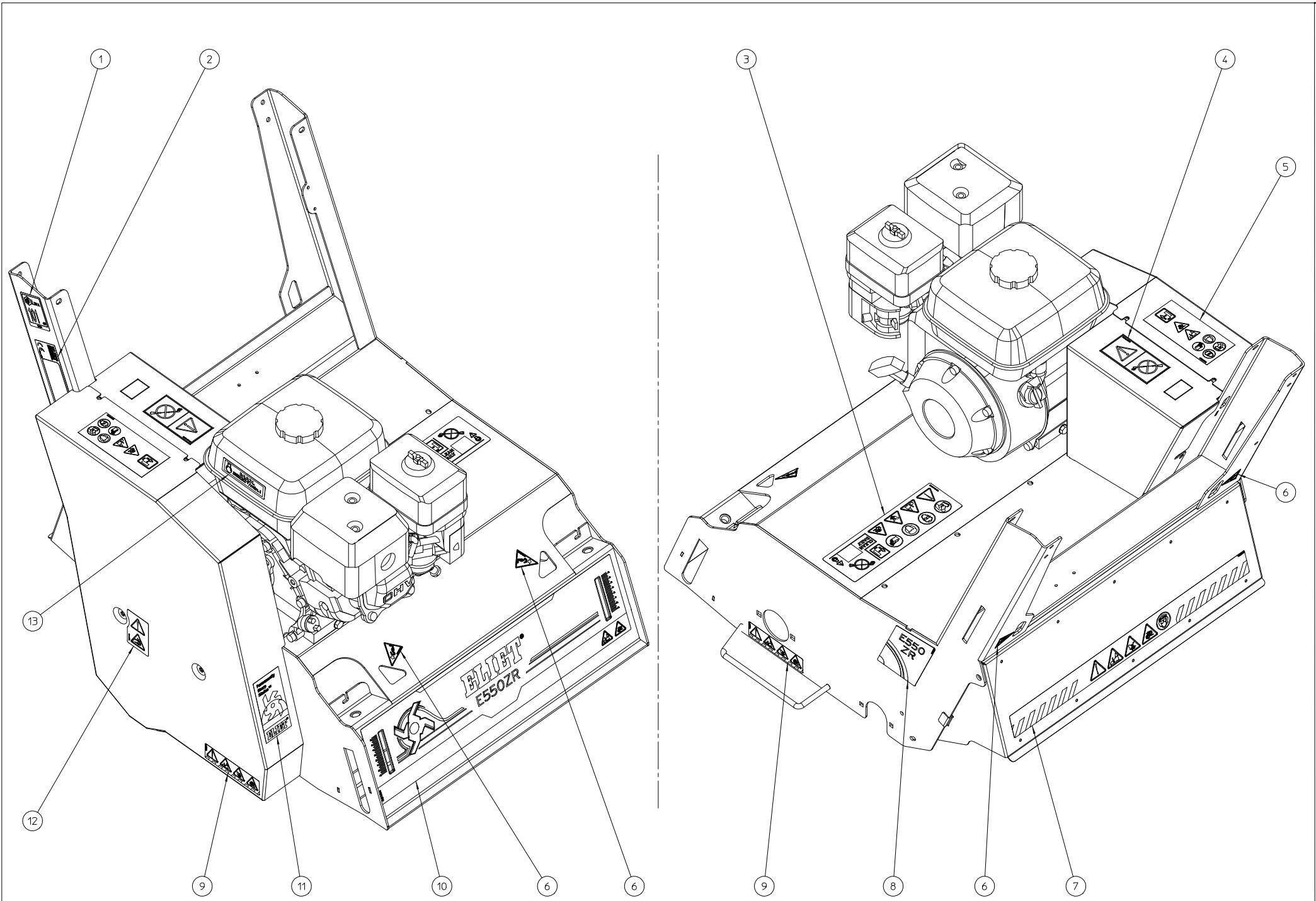
| C550 -- OPTIES | | | | | | |
|----------------|----------------|-----|---|------|------------|--|
| NO | MMA 01 480 180 | REV | 1 | DATE | 2021/08/30 | |

MMA 01 480 180

OPTIES-C-550-COLLECTOR

| Pos No | Name | Description |
|---------------|----------------|--|
| 1 | BE 412 430 000 | COMPTEUR HEURES ET TR/MIN SENDEC A CLIPS |
| 2 | MPA 01 420 220 | SUPPORT NETTOYAGE DZC600 |

| Total Qty | |
|-----------|---|
| | 1 |
| | 1 |



| | | | | | | |
|------------------|----------------|-----|---|------|------------|--|
| E550ZR --KLEVERS | | | | | | |
| NO | MMA 01 540 190 | REV | 1 | DATE | 2021/08/30 | |

MMA 01 540 190**MONTAGE KLEVERS**

| Pos No | Name | Description | Total Qty |
|--------|----------------|---|-----------|
| 1 | BQ 505 112 101 | AUT. DECIBEL BL360 101 DB | 1 |
| 2 | BQ 505 010 010 | AUT.ELIET CE 120X30 | 1 |
| 3 | BQ 505 010 650 | KLEVER-WAARSCHUWING NAAR VEILIGHEID 230 X 70 | 1 |
| 4 | BQ 505 010 465 | KLEVER--C550_VERBODEN_AF_TE_SPUITEN | 1 |
| 5 | BQ 505 010 550 | KLEVER--C550 WAARSCHUWING MET 7 PICTOGRAM | 1 |
| 6 | BQ 505 010 560 | KLEVER--C550 HAAK | 4 |
| 7 | BQ 505 010 700 | KLEVER--CE WAARSCHUWING NAAR VEILIGHEID | 1 |
| 8 | BQ 501 540 020 | KLEVER--E550ZR SIDE | 1 |
| 9 | BQ 505 010 710 | KLEVER--C550 CE WAARSCHUWING NAAR VEILIGHEID 4 IC | 2 |
| 10 | BQ 501 540 010 | KLEVER--E550ZR FRONT | 1 |
| 11 | BQ 501 010 100 | AUTO_SHAPR_BLADES | 1 |
| 12 | BQ 505 010 660 | KLEVER-WAARSCHUWING NAAR VEILIGHEID 45X70 | 1 |
| 13 | BQ 505 010 030 | AUT.MAX 3200T/MIN.! 90X25 | 1 |